



FY 2019

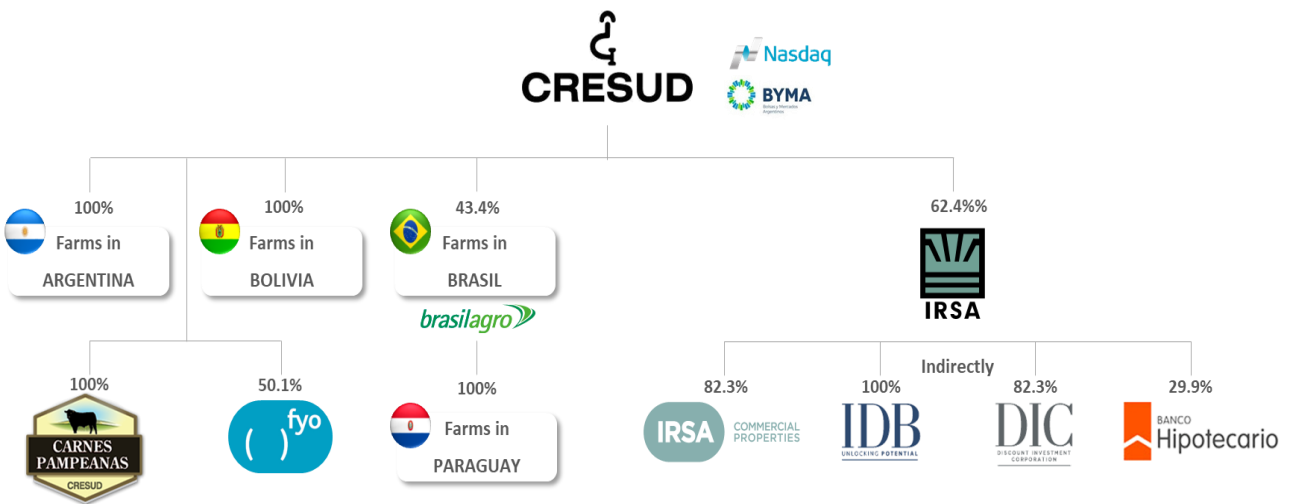


Corporate Profile

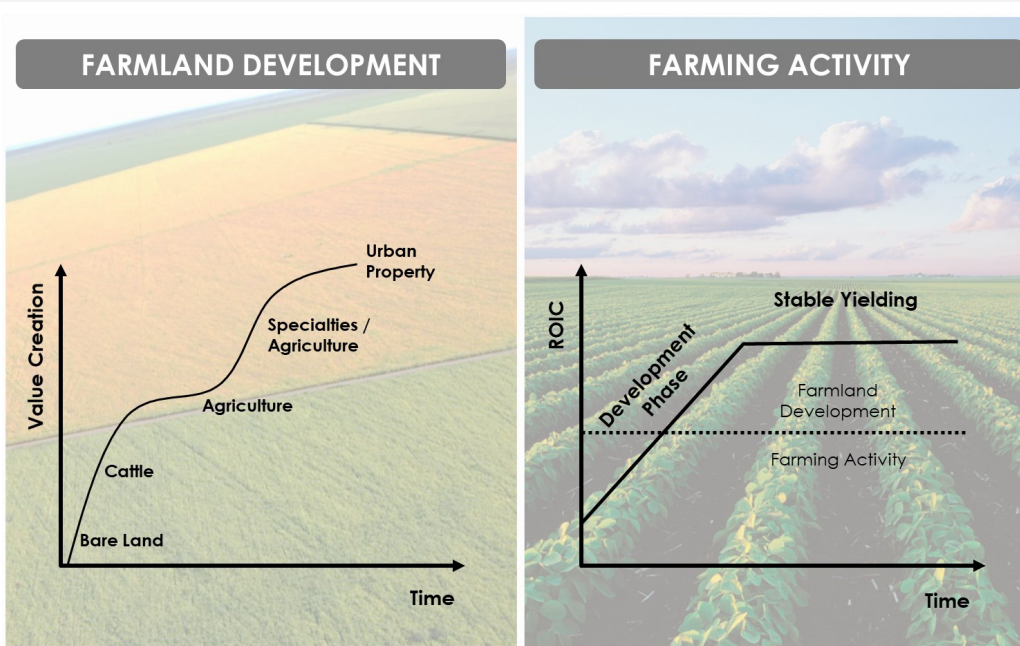
Cresud is a Latin-American agricultural company leader in the production of basic agricultural goods, with operations in Argentina, Bolivia, and Paraguay & Brazil through its investment in BrasilAgro-Companhia Brasileira de Propiedades Agricola (Cresud holds 43.4%). Cresud is currently involved in a range of activities including crop production, cattle raising and milk production. Cresud's business model, focuses on the acquisition, development and exploitation of properties having attractive prospects for agricultural production and/or value appreciation and the selective disposition of such properties where appreciation has been realized.

Cresud's shares are listed in Buenos Aires Stock Exchange (CRES) and in NASDAQ (CRESY)

Additionally, Cresud holds 62.4% of IRSA (NYSE:IRS), a diversified Real Estate leader in Argentina.



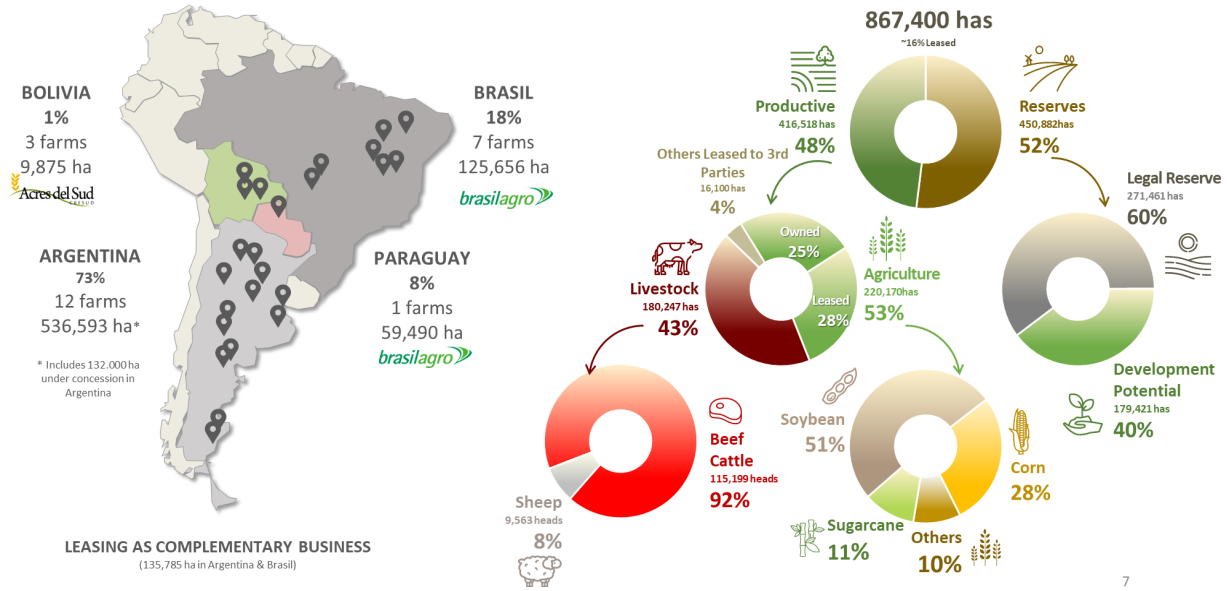
Cresud Business Strategy





Farmland Portfolio

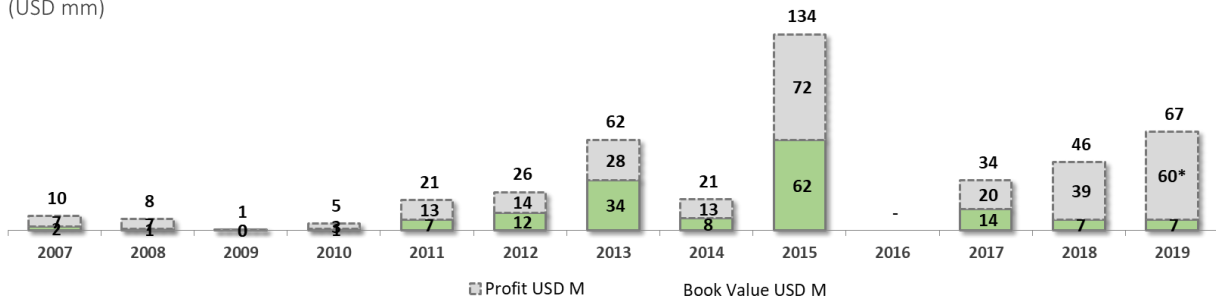
Cresud manages a portfolio of 23 farms in Latin America reaching approximately 860,000 hectares under management combining a mix of farming and farmland development.



Farmland Sales & Development

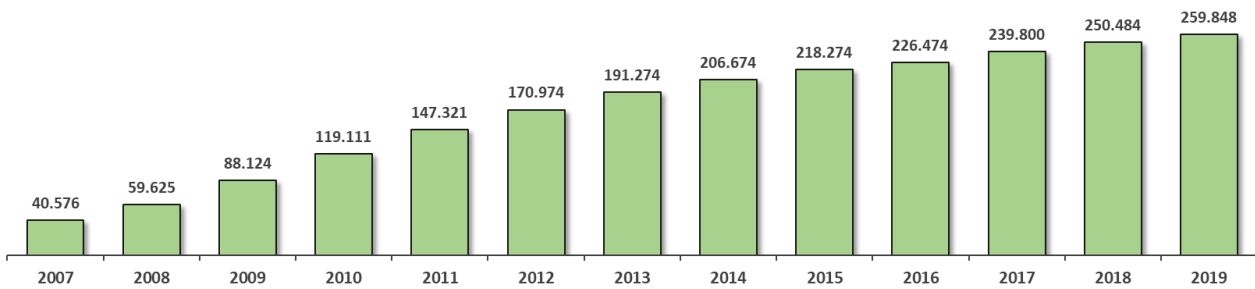
Farmland Sales Evolution

(USD mm)



Farmland Development Evolution

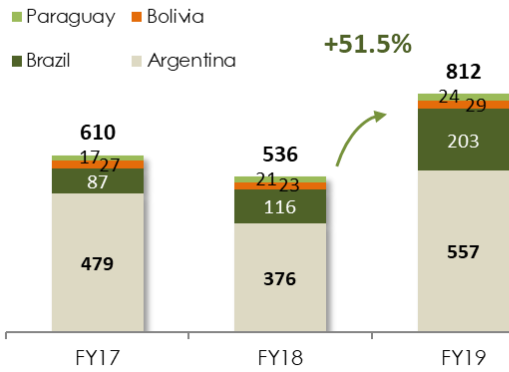
(in thousand hectares)



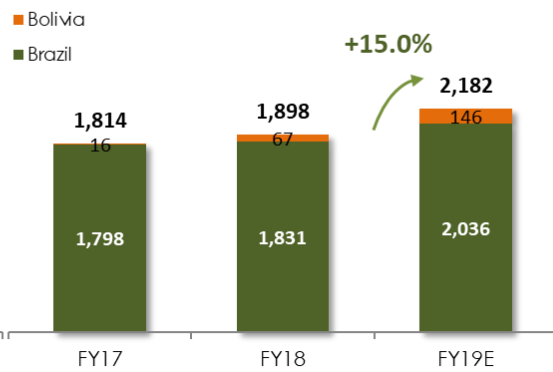


Farming Activity

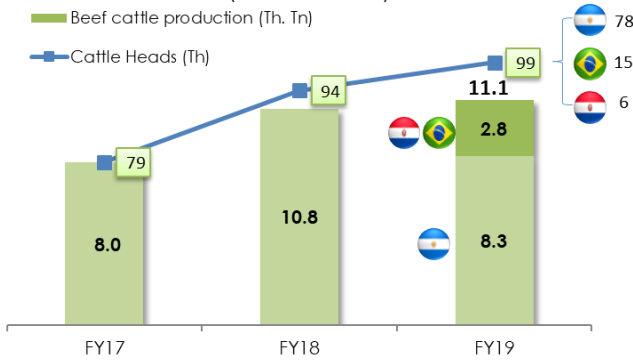
Crop Production (Th. Tn)



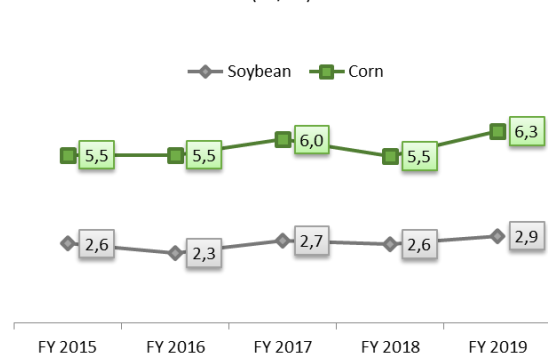
Sugarcane Production (Th. Tn)



Meat Production & Cattle Heads (Th. Tn & Th. Units)



Yields Evolution (Tn/ha)



Company Indebtedness

CRESUD Net Debt

436.5

Amortization Schedule

